

CERTIFICATE OF ANALYSIS

Order Type: CBD
Order ID: OR2019-5013

Customer ID: 32
Customer Name: CBD Plus USA

Harvest/Extract Lot: None
Harvest/Extract Batch: None

Cultivar (Strain): Full Spectrum Hot Cream 1030

Lab ID: SA2019-15880

Sample Matrix: Lotion/Salve

Sample Date: 10/30/2019

Date Received: 10/30/2019

Date Completed: 10/31/2019

Remarks:

CANNABINOID (POTENCY) PROFILE

Analysis Date/Time: 10/31/2019 1225

Method: 2019-10-18T20:36:50Z

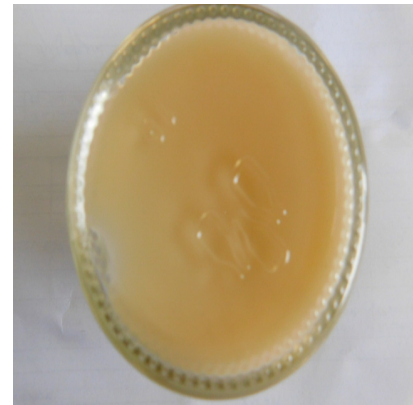
Moisture Content (%): -

Analyst: OL

Instrument: Agilent 1100

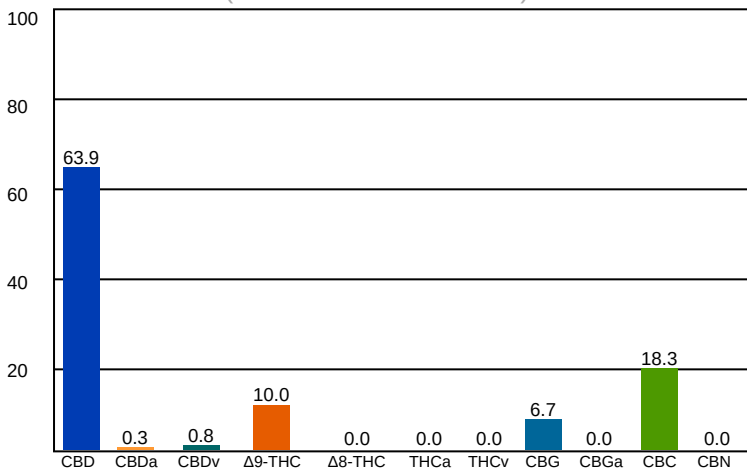
Water Activity (aw): -

Cannabinoid	Result (%)	Result (mg/g)	Reporting Limit (mg/g)	Result (mg/mL)	Per Unit (mg)
CBD	1.91	19.1	0.0255	-	573
CBDa	0.00981	0.0981	0.0255	-	3
CBDv	0.0249	0.249	0.0255	-	7
Δ9-THC	0.298	2.98	0.0255	-	89
Δ8-THC	-	-	0.0255	-	-
THCa	-	-	0.0255	-	-
THCv	-	-	0.0255	-	-
CBC	0.547	5.47	0.0255	-	164
CBG	0.199	1.99	0.0255	-	60
CBGa	-	-	0.0255	-	-
CBN	-	-	0.0255	-	-



TOTAL	2.99	30	-	897	UNIT MASS (g): 30
TOTAL THC	0.298	2.98	-	89	"-" Not detected above RL.
TOTAL CBD	1.92	19	-	576	

Cannabinoid Distribution (% of Total Cannabinoids)



Deviations from standard operating procedure: None

Recoveries for all analyte standards: 90-110%
Replicate Uncertainties: <5% RSD, <20% RPD
Sample/Reagent Blanks: <RL for all analytes

Values for plant matter are adjusted for moisture content.

Total THC = (THCa x 0.877) + Δ9-THC
Total CBD = (CBDa x 0.877) + CBD

Percentage results are reported by mass.
mg/g results are reported as mass component per mass material.

Abbreviations: UV - Ultraviolet, HPLC - High Pressure Liquid Chromatography, RL - Reporting Limit, RPD - Relative Percent Difference, RSD - Relative Standard Deviation

This information is provided as a service and makes no claims of efficacy and/or safety of this product. Results are applicable only for the sample(s) analyzed and for the specific analysis conducted. This report is for informational purposes only and should not be used to diagnose, treat, or prevent any medical-related symptoms.

The statements and results herein have not been approved and/or endorsed by the FDA.

REPORT OF LABORATORY ANALYSIS

This report shall not be reproduced, except in full, without the written consent of Felling Analytical Services and Technology (F.A.S.T.), LLC

Kyle W. Felling
Kyle W. Felling, Ph.D.
Laboratory Director