



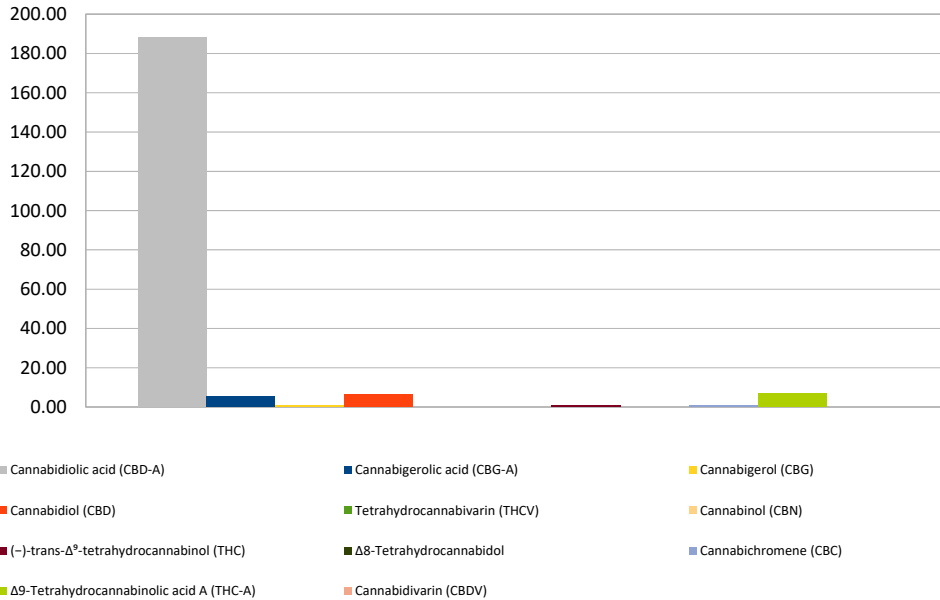
Cannabinoid Profile

Customer: CBD Plus USA
Customer Sample ID: Sour Space Candy
Laboratory Number: 201903-0320
Extraction Technician: DF
Analytical Chemist: GB

Extraction Date(s):	Analysis Date(s)
3/7/2019	3/7/2019

Cannabinoid (HPLC)	Results		
	LOD (mg/g)	Percent	mg/g
Cannabidiol (CBD)	<0.2		
Cannabidiolic acid (CBD-A)		18.79%	187.91
Cannabigerolic acid (CBG-A)		0.51%	5.13
Cannabigerol (CBG)		0.07%	0.68
Tetrahydrocannabivarin (THCV)	<0.2		
Cannabinol (CBN)	<0.2		
(-)-trans- Δ^9 -tetrahydrocannabinol (THC)		0.09%	0.89
Δ^8 -Tetrahydrocannabinol	<0.2		
Cannabichromene (CBC)		0.10%	0.97
Δ^9 -Tetrahydrocannabinolic acid A (THC-A)		0.68%	6.82
Cannabinoids Total		Percent	mg/g
Max Active THC		0.69%	6.87
Max Active CBD		16.35%	163.46
T. Active Cannabinoids		0.86%	8.60
Total Cannabinoids		19.93%	199.35
Ratios			
25.22 CBD to THC		0.04 :1 THC to CBD	

Cannabinoid (mg/g)



Altitude Consulting, LLC utilizes NIST traceable Reference Standards and Certified Reference Material to calibrate analytical instruments along with proven analytical methods. The methods are applied in the most ethical manner following good laboratory practice guidelines. The results of this report are based solely on the sample submitted and cannot be reproduced.

This report expires 30 days after analysis date.



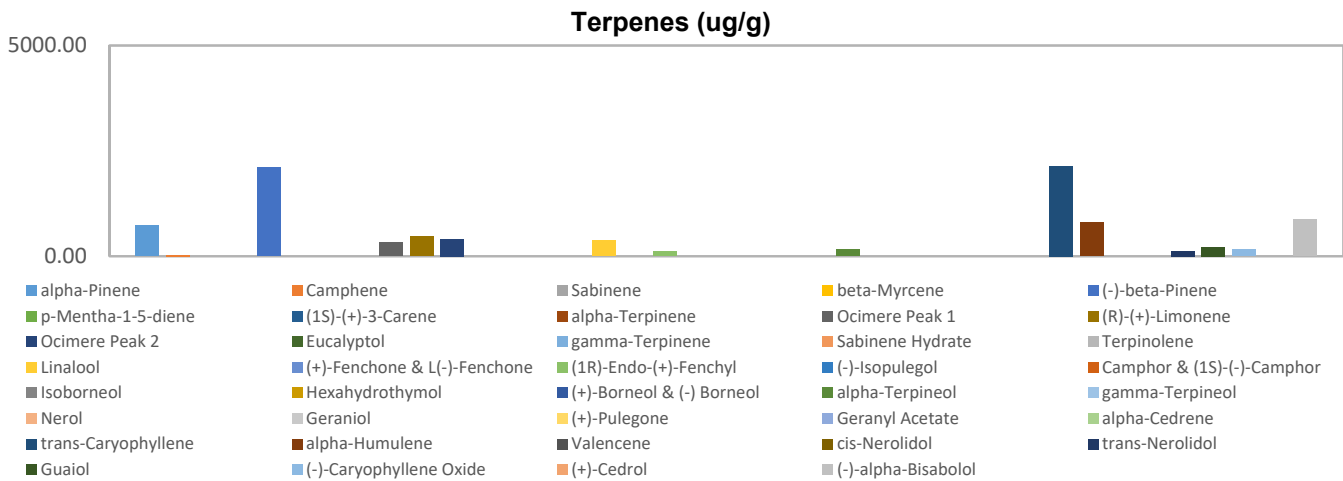
Terpenes Profile

Customer: CBD Plus USA
Customer Sample ID: Sour Space Candy
Laboratory Number: 201903-0320
Extraction Technician: DF
Analytical Chemist: GB

Extraction Date(s)	Analysis Date(s)
3/7/2019	3/7/2019

Terpene	Results ug/g	Terpene	Results ug/g
alpha-Pinene	729.52	Isoborneol	
Camphene	28.49	Hexahydrothymol	
Sabinene		(+)-Borneol & (-) Borneol	
beta-Myrcene		alpha-Terpineol	153.54
(-)-beta-Pinene	2104.47	gamma-Terpineol	
p-Mentha-1-5-diene		Nerol	
(1S)-(+)-3-Carene		Geraniol	
alpha-Terpinene		(+)-Pulegone	
Ocimere Peak 1	321.92	Geranyl Acetate	
(R)-(+)-Limonene	475.46	alpha-Cedrene	
Ocimere Peak 2	411.16	trans-Caryophyllene	2142.86
Eucalyptol		alpha-Humulene	796.99
gamma-Terpinene		Valencene	
Sabinene Hydrate		cis-Nerolidol	
Terpinolene		trans-Nerolidol	123.47
Linalool	369.41	Guaiol	215.08
(+)-Fenchone & L(-)-Fenchone		(-)-Caryophyllene Oxide	152.55
(1R)-Endo-(+)-Fenchyl	111.40	(+)-Cedrol	
(-)-Isopulegol		(-)-alpha-Bisabolol	864.27
Camphor & (1S)-(-)-Camphor			

Empty result indicates data is less than detection limit. Reporting Limit is roughly 40 ug/g depending on amount extracted.



Altitude Consulting, LLC utilizes NIST traceable Reference Standards and Certified Reference Material to calibrate analytical instruments along with proven analytical methods. The methods are applied in the most ethical manner following good laboratory practice guidelines. The results of this report are based solely on the sample submitted and cannot be reproduced.

This report expires 30 days after analysis date.